

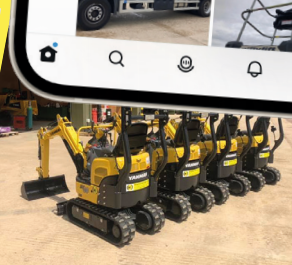
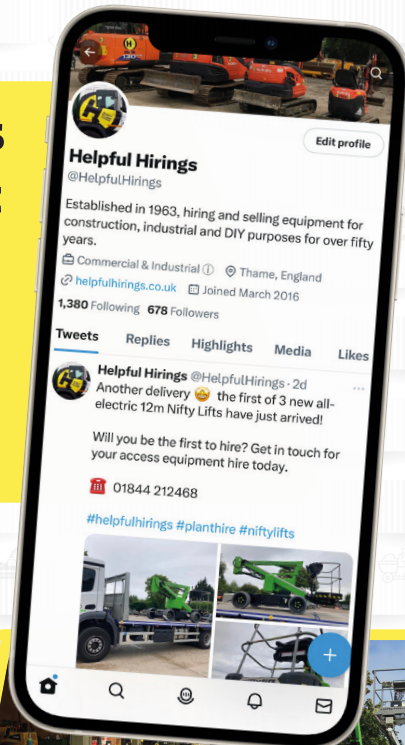


Thame Depot

Towersey Road, Thame,
Oxfordshire, OX9 3QB

Tel: 01844 212468

**Follow @helpfulhirings
online for all our latest
updates, competitions,
new additions to the
fleet and seasonal
opening hours**



Open 7.30am - 5pm Monday to Friday and 8am - 1pm on Saturdays

Helpful Hirings



helpfulhirings.co.uk

YOUR LOCAL TOOL AND PLANT HIRE COMPANY



Follow us on social media for all our latest updates and new additions to the fleet

INFO AND TERMS

Monday - Friday	Saturday	Sunday	Bank Holidays
7.30am - 5.00pm	8am - 1pm	Closed	Closed

Can't find what you're looking for? Give us a call and we may still be able to help!

Visit our website for further details and machine specifications. You can also find a comprehensive list of showroom items we have for sale including power tools, hand tools, PPE, clothing and garden machinery.



HireGuard Insurance Available

HireGuard Insurance offers protection for physical loss or damage with a limit of liability up to £100,000 on any one occurrence with no Single Article Limit.

Ask about HireGuard Insurance during your next machinery hire!



All hires are subject to Hire Association of Europe standard terms and conditions. A deposit plus hire charge will be required on commencement of hire. Insurance for all loss and damage is the customer's responsibility

Equipment information and prices indicated are correct at time of printing (01/08/2022), but Helpful Hirings Ltd reserve the right to alter rates and information without prior notice. **ALL PRICES EXCLUDE VAT**

SHOWROOM FRANCHISES

STANLEY

K'ARCHER



fischer 
FIXING SYSTEMS

Indespension
TRAILERS



Weldability® sif

Abus - Padlocks &
Chains

Adhesives

Belle Mixers

Bosch - Power Tools
Bullfinch - Flame Guns

Cargo Straps

CK - Hand Tools

Clarke - Compressors

Cleaning Chemicals

Cutting Discs

Cst/Berger Surveying

Diamond Discs - Cores

Draper - Hand Tools
Heaters

Fischer - Fixings

Gardening Tools

Grinding Discs

Hammerite - Paint

Hilti - Fixings

Jigsaw Blades

Karcher - Washers

Light Bulbs

Nuts, Bolts & Studdings

Oils & Greases

Safety Boots

Safety Wear

Seat Covers

Spanners & Sockets

Stanley - Hand Tools

Stephill - Generators

Tarpaulins

Trailer Spares & Sales

Trend - Routers & Bits

Tsurumi - Pumps

Van Vaults

Welding Supplies

DRAPER



ABUS

Bullfinch

 **TSURUMI PUMP**

Clarke
POWER PRODUCTS

 **Paslode**

STEPHILL
GENERATORS

trend
routing technology

THAME DEPOT



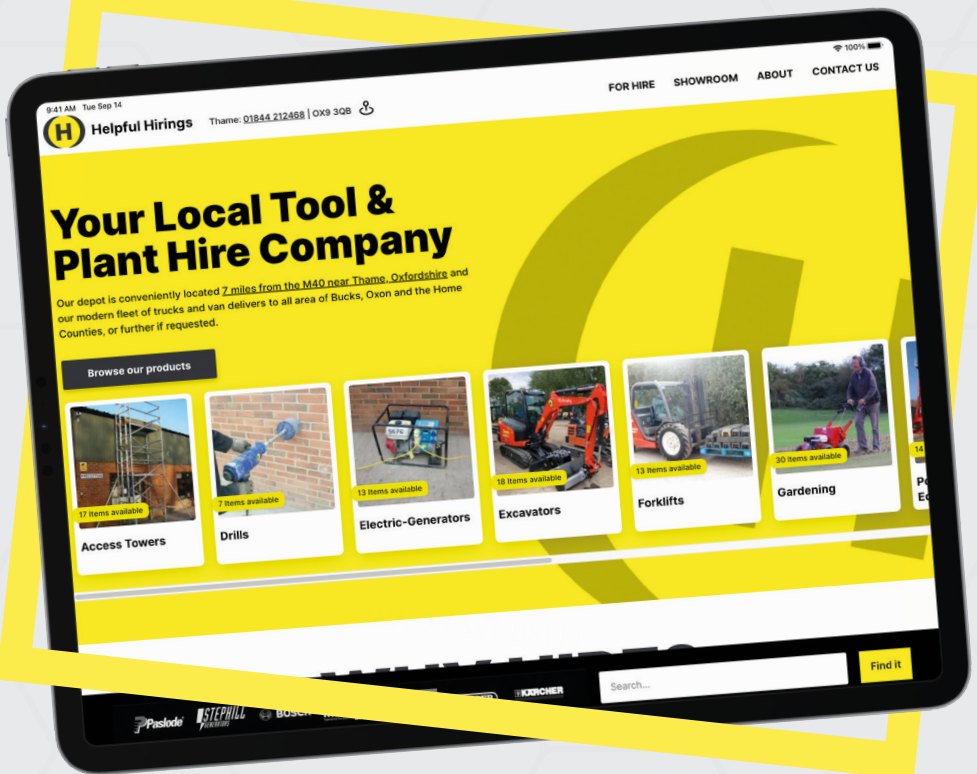
Our depot are conveniently located 7 miles from the M40 in Thame, Oxfordshire and just one mile from the A41 in Aylesbury, Buckinghamshire. Our modern fleet of trucks and van delivers to all area of Bucks, Oxon and the Home Counties, or further if requested.

THAME SHOWROOM



NEW WEBSITE

We have launched a fantastic new Helpful Hirings website equipped with a fully searchable stocklist that can be updated swiftly, bringing our website up to modern standards to support our ever-growing business requirements. Thanks to our great website design team we have been able work collaboratively to create a modern, user friendly experience.



Scan me

View our website at
helpfulhirings.co.uk

FEATURED MACHINES



UTILITY VEHICLES



4M CONVEYOR



0.8 - 14T EXCAVATOR



AVANT LEGUAN TRACKED BOOM



10-23M ACCESS PLATFORMS

CONTENTS

EXCAVATORS & DUMPERS

ARBORIST EQUIPMENT

TELEHANDLERS & FORKLIFTS

POWERED ACCESS PLATFORMS

COMPACTION & CONCRETING

LADDERS, BOARDS & SCAFFOLD TOWERS

LIFTING & MATERIAL HANDLING

SITE EQUIPMENT & TOOLS

GARDENING & RECREATION

TRACTORS & UTILITY VEHICLES

TRAILERS

EXCAVATORS & DUMPERS

EXCAVATORS	Code	1 DAY	2 DAY	3 DAY	1 WEEK
0.8 TONNE EXCAVATOR 680MM WIDE	023101	£75	£149	£200	£250
1.0 TONNE EXCAVATOR	023102	£75	£149	£200	£250
1.7 TONNE EXCAVATOR	023103	£80	£154	£206	£260
2.6 TONNE EXCAVATOR	023104	£93	£175	£250	£340
3.5 TONNE EXCAVATOR	023106	£105	£196	£281	£360
4.0 TONNE EXCAVATOR	023107	£115	£216	£310	£400
5.6 TONNE EXCAVATOR	023108	£134	£252	£362	£475
8.3 TONNE EXCAVATOR	023111	£154	£292	£418	£570
10 TONNE EXCAVATOR	023112	£165	£313	£448	£610
13 TONNE EXCAVATOR	023109	£233	£352	£528	£700
14 TONNE EXCAVATOR W/BLADE	023124	£245	£370	£556	£720



023112 - 10 TONNE EXCAVATOR

EXCAVATORS & DUMPERS



023102 - 1.0 TONNE EXCAVATOR



023118- GRAPPLE

EXCAVATOR ATTACHMENTS

	Code	1 DAY	2 DAY	3 DAY	1 WEEK
HYDRAULIC BREAKER FOR 1-1.7 TONNE	023115	£62	£94	£140	£186
HYDRAULIC BREAKER FOR 2.6-4.3 TONNE	023116	£94	£142	£213	£280
HYDRAULIC BREAKER FOR 5.7-10 TONNE	023117	£107	£161	£242	£310
HYDRAULIC BREAKER FOR 13-14 TONNE	023123	£123	£185	£278	£370
KUBOTA KX080 GRAPPLE	023118	£48	£62	£76	£95
KUBOTA KX080 RAKE	023119	£31	£39	£48	£60
POST BORER FOR KX36/61	023120	£63	£95	£141	£189
ROTATING TREE SHEAR FOR 13T EXCAVATOR	023121	£293	£379	£467	£550

THAME 01844 212468 - ALL PRICES PLUS VAT

EXCAVATORS & DUMPERS



021111 - DUMPER 4WD 6 TONNE SWIVEL

DUMPERS	Code	1 DAY	2 DAY	3 DAY	1 WEEK
POWER POWER 300KG	021098	£47	£71	£107	£140
SKIPLOADER 0.5 TONNE TRACK PETROL	021101	£65	£96	£123	£155
SKIPLOADER 0.8 TONNE TRACK DIESEL	021100	£66	£97	£125	£160
LIFTON 4WD 1 TONNE	021102	£60	£88	£134	£170
DUMPER 4WD 1.5 TONNE HI-S	021107	£80	£117	£148	£180
DUMPER 4WD 2 TONNE	021104	£61	£88	£113	£145
DUMPER 4WD 2 TONNE SWIVEL	021108	£69	£101	£129	£160
DUMPER 4WD 3 TONNE	021105	£70	£103	£130	£165
DUMPER 4WD 3 TONNE SWIVEL	021109	£73	£109	£138	£175
DUMPER 4WD 6 TONNE	021106	£103	£150	£192	£240
DUMPER 4WD 6 TONNE SWIVEL	021111	£110	£157	£201	£260
DUMPER 4WD 10 TONNE	021113	£143	£213	£271	£320
DUMPER TRACKED 2.5 TONNE	021112	£194	£288	£365	£460

EXCAVATORS & DUMPERS



021106 - 6T DUMPER



021100 - SKIPLOADER 0.8 TONNE
TRACK DIESEL



021113 - DUMPER 4WD 10 TONNE



021102 - 4WD 1 TONNE DUMPER

MATERIALS HANDLING	Code	1 DAY	2 DAY	3 DAY	1 WEEK
4M CONVEYOR	043147	£140	£140	£140	£140



043147 - 4M 110V SHIFTA CONVEYOR

ARBORIST EQUIPMENT

CHIPPERS & SHREDDERS	Code	1 DAY	2 DAY	3 DAY	1 WEEK
150MM TRAILED CHIPPER 6"	034001	£185	£280	£370	£450
200MM TRAILED CHIPPER 8"	034002	£220	£329	£439	£549
150MM TRACKED CHIPPER 6"	034003	£220	£329	£439	£549
200MM TRACKED CHIPPER 8"	034004	£260	£400	£550	£650

POWERED PLATFORMS	Code	1 DAY	2 DAY	3 DAY	1 WEEK
12M 4WD ROUGH TERRAIN BOOM LIFT	061105	£159	£258	£337	£396



022120 - AVANT 745 LOADER



034004 - 200MM TRACKED CHIPPER 8"

ARBORIST EQUIPMENT



061114 - LEGUAN 19M TRACKED BOOM

AVANT & ATTACHMENTS	Code	1 DAY	2 DAY	3 DAY	1 WEEK
AVANT 745 ARTICULATED LOADER W/BUCKET	022120	£130	£200	£270	£420
MUCK & GRAPPLE FORK	022108	£28	£39	£50	£61
1.5M SWEEPER COLLECTOR	022109	£50	£74	£99	£120
TRENCHER ATTACHMENT FOR AVANT 745	022125	£149	£207	£267	£295
LOG GRAB	022112	£28	£39	£50	£61
STUMP GRINDERS	Code	1 DAY	2 DAY	3 DAY	1 WEEK
STUMP GRINDER 13HP	033135	£116	£197	£272	£270
STUMP GRINDER 6HP	033134	£80	£120	£160	£200

TELEHANDLERS & FORKLIFTS

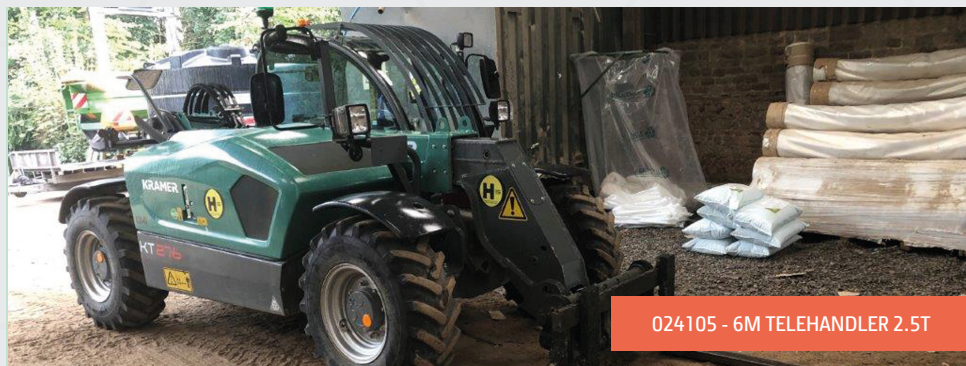
TELEHANDLERS & FORKLIFTS	Code	1 DAY	2 DAY	3 DAY	1 WEEK
MANITOU MASTED FORKLIFT 2T	024103	£143	£209	£275	£310
6M TELEHANDLER 4WS 2.5 T	024105	£165	£242	£330	£380
10M TELEHANDLER 4WS 3.9 T	024107	£175	£253	£341	£410
13-14M TELEHANDLER 4WS 3.8 T	024108	£200	£320	£440	£520
17-18M TELEHANDLER 4WS 4.0 T	024110	£220	£375	£500	£630



024103 - 3.3M MASTED FORKLIFT



024108 - 3.8 T 13-14M TELEHANDLER
4WS



024105 - 6M TELEHANDLER 2.5T

TELEHANDLERS & FORKLIFTS



024110 - 17M TELEHANDLER 4T

FORKLIFT ACCESSORIES	Code	1 DAY	2 DAY	3 DAY	1 WEEK
TIPPING SKIP 1 METRE	024115	£39	£39	£39	£39
FORKLIFT BLOCK GRAB	024117	£48	£62	£76	£95
TELEHANDLER 1.8M EXT.FORK 820KG	024118	£26	£33	£41	£51
TELEHANDLER BUCKET	024119	£26	£33	£41	£51
CRANE HOOK 2000KG	024120	£26	£26	£26	£26
SAFETY NET FOR BLOCK GRAB	024121	£8	£9	£11	£14
CRANE JIB 2M 1000KG	024123	£26	£33	£41	£51
CRANE HOOK 4500KG	024124	£42	£42	£42	£42

POWERED ACCESS PLATFORMS

POWERED PLATFORMS	Code	1 DAY	2 DAY	3 DAY	1 WEEK
12M TRAILER MTD TELESCOPIC BOOM LIFT BATTERY	061101	£90	£179	£238	£290
TRACKED 12M TELESCOPIC BOOM LIFT DIESEL	061102	£113	£225	£300	£374
10M BOOM LIFT BATTERY	061103	£97	£192	£256	£319
12M TELESCOPIC BOOM LIFT BATTERY	061104	£120	£200	£280	£340
12M 4WD ROUGH TERRAIN BOOM LIFT	061105	£159	£258	£337	£396
16M TELESCOPIC BOOM LIFT 4WD DIESEL	061106	£180	£290	£400	£480
18M TELESCOPIC BOOM LIFT 4WD DIESEL	061111	£220	£330	£440	£550
20M TELESCOPIC BOOM LIFT 4WD DIESEL	061112	£240	£363	£484	£595
8M SCISSOR LIFT BATTERY	061107	£90	£140	£180	£220
8M SCISSOR LIFT 4WD DIESEL	061108	£135	£210	£290	£360
11M SCISSOR LIFT BATTERY	061109	£110	£180	£235	£275
11M SCISSOR LIFT 4WD DIESEL	061110	£165	£242	£319	£385



061114 - LEGUAN 19M TRACKED BOOM



061111 - 18M TELESCOPIC BOOM LIFT
4WD DIESEL

POWERED ACCESS PLATFORMS



061104 - 12M BATTERY NIFTYLIFT



061107, 061108 - BATTERY SCISSOR LIFT

HARNES & LIFELINES

SAFETY HARNES EN361

Code

1 DAY

2 DAY

3 DAY

1 WEEK

043130

£11

£14

£17

£20

RETRACTABLE LIFELINE

043141

£35

£43

£53

£66

THAME 01844 212468 - ALL PRICES PLUS VAT

COMPACTION & CONCRETING

COMPACTION	Code	1 DAY	2 DAY	3 DAY	1 WEEK
VIBRATING PLATE SMALL	014124	£24	£29	£37	£46
VIBRATING PLATE LARGE	014122	£26	£33	£40	£50
NEOPRENE PAD 16"X 20"	013110	£9	£11	£14	£17
VIB.UPRIGHT RAMMER 10X13"	013112	£33	£43	£53	£66
VIB.PLATE DIESEL 16"X 20"	013125	£35	£44	£53	£68
REV.PLATE DIESEL 20"X 30"	013126	£63	£81	£99	£125

CEMENT MIXERS	Code	1 DAY	2 DAY	3 DAY	1 WEEK
PAN RESIN MIXER	013100	£71	£82	£95	£120
MIXER 4/3 ELECTRIC	013101	£17	£20	£22	£28
MIXER 4/3 PETROL	013102	£20	£24	£27	£33
MIXER 5/3.5 ELECTRIC	013103	£44	£44	£44	£44
MIXER 5/3.5 DIESEL	013127	£55	£55	£55	£55



COMPACTION & CONCRETING



013104 - POWER FLOAT PETROL



013127 - DIESEL MIXER 5/3.5

ROLLERS	Code	1 DAY	2 DAY	3 DAY	1 WEEK
28" PED. SINGLE DRUM ROLLER DIESEL	013113	£47	£61	£74	£93
PED. ROLLER SINGLE DRUM PETROL	013114	£40	£53	£62	£79
80 RIDE-ON ROLLER	013117	£84	£110	£132	£165
120 RIDE-ON ROLLER	013118	£100	£134	£159	£195

CONCRETE PREP & FINISH	Code	1 DAY	2 DAY	3 DAY	1 WEEK
POWER FLOAT PETROL	013104	£38	£48	£58	£73
POWER FLOAT PAN	013105	£8	£9	£11	£14
VIB. POKER PETROL/ELECTRIC	013107	£30	£39	£47	£59
EXTRA POKER SHAFT	013108	£15	£19	£22	£28
EASY FLOAT	013121	£17	£21	£26	£32
VIBRATING SCREED UNIT	013115	£40	£51	£62	£79
TWIN BEAM 5.2M	013201	£20	£21	£22	£26
TWIN BEAM 6.2M	013202	£24	£26	£27	£31
TWIN BEAM 7.2M	013203	£30	£31	£33	£39
3M ROAD FORMS 4" OR 6"	055110	£5	£5	£5	£5

Mold oil for sale for roadforms & screeds. Cleaning chargeable.
See also COMPRESSOR TOOLS and CUTTING for other concrete finishing equipment.

LADDERS, BOARDS & SCAFFOLD TOWERS

TOWERS	Code	1 DAY	2 DAY	3 DAY	1 WEEK
TOWER 0.9MW X 1.2MH	070904	£28	£32	£37	£44
TOWER 0.9MW X 2.2MH	070907	£32	£39	£44	£53
TOWER 0.9MW X 3.2MH	070910	£37	£44	£51	£61
TOWER 0.9MW X 4.2MH	070913	£41	£50	£57	£68
TOWER 0.9MW X 5.2MH	070916	£47	£54	£63	£75
TOWER 0.9MW X 6.2MH	070919	£51	£60	£70	£83
TOWER 1.45MW X 1.2MH	070921	£28	£32	£37	£44
TOWER 1.45MW X 2.2MH	070922	£32	£39	£44	£53
TOWER 1.45MW X 3.2MH	070923	£37	£44	£51	£61
TOWER 1.45MW X 4.2MH	070926	£41	£50	£57	£68
TOWER 1.45MW X 5.2MH	070929	£47	£54	£63	£75
TOWER 1.45MW X 6.2MH	070932	£51	£60	£70	£83
TOWER 1.45MW X 7.2MH	070935	£55	£65	£76	£91
TOWER 1.45MW X 8.2MH	070938	£70	£82	£95	£113
TOWER 1.45MW X 9.2MH	070941	£73	£88	£102	£120
TOWER 1.45MW X 10.2MH	070944	£79	£94	£108	£128

Available in combinations of width: single 0.9m(SW),double 1.45m(DW). Length: 1.8m, 2.5m

Towers supplied only as complete kits with integral ladders. All components are HH brand-marked for easy identification.

TOWER BRIDGE PLATFORMS	Code	1 DAY	2 DAY	3 DAY	1 WEEK
BRIDGE PLATFORM 3M S/W	068960	£16	£19	£22	£28
BRIDGE PLATFORM 3M D/W	070961	£17	£19	£21	£27

Links 2 towers to provide continuous platform of up to 8m. Includes handrails and toe boards

LADDERS, BOARDS & SCAFFOLD TOWERS



BOARDS	Code	1 DAY	2 DAY	3 DAY	1 WEEK
SCAFFOLD BOARD 8'	065110	£3	£3	£3	£3
SCAFFOLD BOARD 10'	065111	£3	£3	£3	£3
SCAFFOLD BOARD 13'	065112	£3	£3	£3	£3
STAGING BOARD 10'/3.0M	067101	£14	£14	£14	£14
STAGING BOARD 12'/3.6M	067102	£15	£15	£15	£15
STAGING BOARD 14'/4.2M	067103	£16	£16	£16	£16
STAGING BOARD 16'/4.8M	067104	£18	£18	£18	£18
STAGING BOARD 20'/6.0M	067106	£22	£22	£22	£22
3.6M YOUNGMAN SUPERBOARD	067108	£16	£16	£16	£16
STAGING GUARD RAIL POST	067110	£4	£4	£4	£4

LADDERS, BOARDS & SCAFFOLD TOWERS



042110 - MINT LOW LEVEL PLATFORM



069911 - STAIR TOWER 4.2M

TRESTLES	Code	1 DAY	2 DAY	3 DAY	1 WEEK
NO.1 TRESTLE 1'8" - 2'9"	065113	£4	£4	£4	£4
NO.2 TRESTLE 2'7" - 4'6"	065114	£4	£4	£4	£4
NO.3 TRESTLE 3'6" - 6'0"	065115	£4	£4	£4	£4
TRESTLE GUARDRAIL POST	065116	£3	£3	£3	£3
TRESTLE END FRAME	065117	£6	£6	£6	£6
TRESTLE ACCESS GATE	065118	£9	£9	£9	£9

STAIR/LOW LEVEL PLATFORMS	Code	1 DAY	2 DAY	3 DAY	1 WEEK
MINIT LOW LEVEL PLATFORM	042110	£18	£22	£27	£33
1500 PODIUM PLATFORM	042120	£24	£30	£38	£47
FOLDING ROOM MATE	069101	£18	£22	£27	£33
STAIR TOWER 2.7M	069911	£35	£41	£48	£57
STAIR TOWER 4.2M	069912	£52	£62	£71	£85

LADDERS, BOARDS & SCAFFOLD TOWERS

LADDERS	Code	1 DAY	2 DAY	3 DAY	1 WEEK
3.5M(12') SINGLE LADDER	042101	£7	£9	£10	£13
5.5M(18') DOUBLE LADDER	042102	£15	£16	£18	£22
6.0M(20') DOUBLE LADDER	042103	£14	£16	£18	£22
7.2M(24') DOUBLE LADDER	042104	£16	£18	£20	£26
8.0M(27') DOUBLE LADDER	042105	£17	£19	£22	£28
8.5M(29') DOUBLE LADDER	042106	£17	£20	£24	£29
10M (33') DOUBLE LADDER	042107	£24	£28	£31	£39
7.8M(26') TRIPLE LADDER	042108	£18	£20	£22	£29
11M (35') TRIPLE LADDER	042109	£25	£28	£32	£40
LADDER STAY	042111	£6	£6	£7	£8
4.2M(14') ROOF LADDER	042112	£14	£16	£17	£21
5.1M(17') ROOF LADDER	042113	£13	£16	£19	£24
5.8M(19') ROOF LADDER	042114	£15	£19	£22	£28
6'(8 TREAD) STEP LADDER	042115	£8	£9	£10	£13
9'(12 TREAD) STEP LADDER	042116	£9	£11	£14	£17
6' (8 TREAD) GRP STEP LADDER	042117	£9	£11	£14	£17
4M(13')COMBINATION LADDER	042118	£16	£20	£25	£30
4' (6 TREAD) STEPLADDER	042119	£8	£9	£10	£13

LIFTING & MATERIAL HANDLING



LIFTING	Code	1 DAY	2 DAY	3 DAY	1 WEEK
CHAIN HOIST 500KG 6M	043101	£15	£18	£21	£27
CHAIN HOIST 1000KG 6M	043102	£17	£21	£26	£32
ENGINE CRANE 250KG	043106	£19	£25	£31	£38
ENGINE CRANE 500KG	043107	£24	£29	£37	£46
TIRFOR WINCH 800KG	043116	£28	£36	£44	£55
TIRFOR WINCH 1600KG	043117	£35	£43	£53	£66
PLASTERBOARD LIFT	043126	£35	£43	£53	£66
GENIE SL15 SUPERLIFT	043131	£60	£80	£100	£120
EXTENSION FORK FOR SLA	043129	£9	£11	£14	£17
SCAFFOLD HOIST 200KG SWL	043133	£49	£64	£77	£97

Tirfors are for pulling only

LIFTING & MATERIAL HANDLING

MATERIALS HANDLING	Code	1 DAY	2 DAY	3 DAY	1 WEEK
BEAM TROLLEY 1000KG	043104	£10	£13	£16	£19
MACHINE SKATES 16 TONNE	043110	£25	£31	£39	£48
PALLET TRUCK 2 TONNE	043111	£18	£24	£29	£36
ROLLER CROWBAR	043112	£10	£13	£15	£18
4 WHEEL HANDTRUCK 300KG	043114	£19	£24	£30	£37
STAIR CLIMBING TRUCK	043115	£10	£13	£16	£19
R/T PALLET TRUCK 1500KG	043122	£27	£35	£43	£53
ALLOY LOADING RAMP	043132	£11	£15	£17	£21
PLATFORM TRUCK 250KG	043140	£11	£15	£17	£21
PIANO TROLLEY 200KG	043142	£8	£10	£13	£15
3M SKIP RAMP	043143	£14	£16	£18	£22
STONE VAC 400KG	043144	£60	£76	£95	£118
STONE VAC 150KG	043145	£48	£62	£76	£95
8M 110V BUMPA TILE ELEVATOR	043146	£75	£90	£105	£125
4M CONVEYOR	043147	£140	£140	£140	£140



043147 - 4M 110V SHIFTA CONVEYOR

SITE EQUIPMENT & TOOLS

SITE EQUIPMENT	Code	1 DAY	2 DAY	3 DAY	1 WEEK
BIT. BOILER 10 GAL.	005104	£27	£33	£42	£52
BIT. LADLE & BUCKET	005106	£6	£7	£8	£10
WATER BOWSER 250 GALLON (1000L)	013116	£27	£31	£37	£46
DUST SUPPRESSION KIT FOR BOWSER	013129	£37	£37	£37	£37
110L DIESEL MATE	054110	£15	£19	£22	£28
ROAD PLATE 8'X 4' H.DUTY	055100	£20	£20	£20	£20
ROAD PLATE 8'X 4' M.DUTY	055101	£16	£16	£16	£16
SECURITY CHEST 4'X 2'X 2'	055102	£26	£26	£26	£26
SECURITY CHEST 4'X 4'X 2'	055103	£42	£42	£42	£42
ROAD CONES 900MM	055109	£2	£2	£2	£2
ROAD SIGNS VARIOUS 600MM	055112	£5	£5	£5	£5
ROAD SIGNS VARIOUS 900MM	055114	£7	£7	£7	£7
4.2m VEHICLE ACCESS GATE	055115	£13	£13	£13	£13
3.5M FENCING PANEL	055117	£3	£3	£3	£3
FENCE PANEL STABILISER	055120	£2	£2	£2	£2
960L DIESEL BOWSER	055123	£60	£60	£60	£60
GROUNDGUARD MAT 2.5 X 0.9M	055124	£16	£16	£16	£16
2M SITE HOARDING PANEL	055125	£5	£5	£5	£5
CROWD BARRIER 2.5M X 1.1M	055126	£4	£4	£4	£4
2M ONE PIECE SAFETY BARRIER	055127	£5	£5	£5	£5
LINE MARKER	087105	£9	£11	£14	£17

SITE EQUIPMENT & TOOLS

SURVEY EQUIPMENT	Code	1 DAY	2 DAY	3 DAY	1 WEEK
CAT SIGNAL GENERATOR	075101	£19	£25	£31	£38
CAT CABLE/PIPE DETECTOR	075102	£32	£41	£50	£63
120M PIPE DART DUST ROD	075110	£47	£61	£74	£93

GENERATORS	Code	1 DAY	2 DAY	3 DAY	1 WEEK
GENERATOR 1.0 KVA PETROL SUPER SILENT	027101	£30	£40	£50	£60
GENERATOR 2.7 KVA PETROL	027102	£24	£29	£36	£45
GENERATOR 5.0 KVA PETROL	027104	£31	£39	£48	£60
GENERATOR 4.0 KVA DIESEL	027105	£41	£52	£63	£80
GENERATOR 6.0 KVA PETROL	027106	£35	£43	£53	£66
GENERATOR 6.0 KVA DIESEL SUPER SILENT	027107	£80	£103	£127	£170
GENERATOR 10 KVA DIESEL SUPER SILENT	027108	£90	£120	£160	£190
GENERATOR 25 KVA DIESEL SUPER SILENT	027109	£200	£250	£300	£350
GENERATOR 65 KVA DIESEL SUPER SILENT	027111	£300	£375	£450	£550

RUBBISH CHUTES	Code	1 DAY	2 DAY	3 DAY	1 WEEK
RUBBISH CHUTE 3M	067903	£40	£40	£40	£40
£9 per metre for every additional metre					

SITE EQUIPMENT & TOOLS

DRILLS	Code	1 DAY	2 DAY	3 DAY	1 WEEK
2KG SDS DRILL	003101	£13	£16	£19	£24
4KG SDS DRILL	003102	£18	£22	£27	£33
13MM CORDLESS DRILL 18V	019102	£21	£27	£33	£41
13MM DRILL-ANGLE HEAD	019103	£19	£25	£31	£38
13MM DRILL VAR.SPD/REVERS	019104	£11	£14	£17	£20
UNIBOR MAGNETIC DRILL	019109	£40	£51	£62	£79
DRILL STIRRER/MIXER	019111	£21	£27	£33	£41

ROAD COMPRESSORS & TOOLS	Code	1 DAY	2 DAY	3 DAY	1 WEEK
COMPRESSOR SINGLE TOOL	003110	£55	£71	£87	£109
COMPRESSOR TWO TOOL	003111	£63	£81	£99	£125
COMPRESSOR TWO TOOL & 6KVA GENERATOR	003116	£70	£91	£114	£140

DIAMOND DRILLS & CORE	Code	1 DAY	2 DAY	3 DAY	1 WEEK
DIAMOND DRILL 110V 152MM	019108	£38	£48	£58	£73
DIAM.CORE DRILL 30-52MM	017130	£5	£6	£7	£8
DIAM.CORE DRILL 65-78MM	017131	£5	£6	£7	£9
DIAM.CORE DRILL 100-130MM	017132	£8	£10	£13	£15
DIAMOND CORE DRILL 150MM	017133	£10	£13	£16	£19

SITE EQUIPMENT & TOOLS

BREAKERS	Code	1 DAY	2 DAY	3 DAY	1 WEEK
LIGHT ELECTRIC BREAKER	003103	£19	£25	£31	£38
LIGHT ELECTRIC DRILL/BREAKER	003104	£25	£31	£39	£48
MEDIUM ELECTRIC BREAKER	003106	£21	£27	£35	£42
HEAVY ELECTRIC BREAKER	003107	£39	£51	£63	£77
PETROL/HYD. BREAKER	003108	£47	£61	£74	£93
TILE LIFTER SDS MAX	017100	£9	£9	£9	£9

SITE EQUIPMENT & TOOLS

CUTTING & GRINDING	Code	1 DAY	2 DAY	3 DAY	1 WEEK
MANUAL TILE CUTTER	007121	£8	£10	£13	£15
FLOOR TILE STRIPPER	011120	£40	£51	£62	£79
14" ELECTRIC CHOP SAW	015100	£27	£35	£43	£53
18"MASONRY SAW BENCH PET.	015101	£54	£70	£86	£107
14"MASONRY SAW BENCH 110V	015102	£42	£55	£68	£84
12" PETROL CUTTER	015103	£22	£28	£36	£45
12" ELECTRIC CUTTER	015104	£22	£28	£36	£45
9" ANGLE GRINDER	015105	£14	£16	£17	£21
15LIT PRESSURE WATER TANK	015106	£14	£16	£18	£22
4.5"MINI GRINDER	015107	£9	£10	£13	£16
BLOCK SPLITTER 12"	015108	£18	£24	£29	£36
BLOCK SPLITTER 25"	015109	£55	£77	£99	£110
PRM FLOOR GRINDER 110V	015110	£48	£62	£76	£95
FLOOR SAW 14/18" PETROL	015111	£54	£69	£85	£106
WALL CHASER 110V	015112	£27	£35	£43	£53
TILE SAW ELECTRIC	015113	£27	£35	£43	£53
PETROL FLOOR PLANER***	015114	£49	£64	£77	£97
WALLCHASER 125MM 110V	015116	£47	£61	£74	£93
350MM SLAB BENCH SAW	015131	£66	£85	£105	£130

Use these machines with Dust Extraction Vacuum 011111 or 011130

*** 115mm Wall Chaser cuts to 20mm depth x 25mm width.**

**** 125mm Wall Chaser cuts to 35mm depth x 40mm width**

*****Additional £25 wear charge applies to this machine**

Note: All bladed machines will occur an additional charge to cover blade wear

SITE EQUIPMENT & TOOLS

SAWS	Code	1 DAY	2 DAY	3 DAY	1 WEEK
MAKITA PULL-OVER SAW 10"	059100	£36	£44	£54	£69
DE WALT PULL-OVER SAW 9"	059101	£31	£40	£49	£61
BENCH SAW 12"	059102	£25	£31	£39	£48
CHAINSAW SAFETY KIT	059103	£11	£14	£17	£20
CHAINSAW 12" 240V	059104	£26	£32	£40	£50
CHAINSAW 15" PETROL	059105	£36	£44	£54	£69
CIRCULAR SAW 7"	059108	£13	£16	£19	£24
CIRCULAR SAW 9"	059109	£16	£20	£25	£30
JIGSAW	059110	£11	£15	£17	£21
MITRE CHOP SAW 10"	059111	£25	£31	£39	£48
RECIPROCATING SAW	059112	£15	£18	£21	£27
110V MULTI TOOL	059115	£17	£21	£26	£32

JOINERY	Code	1 DAY	2 DAY	3 DAY	1 WEEK
FLOORBOARD CRAMP	039101	£7	£9	£10	£13
POWER PLANE 3"	039109	£17	£21	£26	£32
ROUTER 1/2" H. DUTY	039111	£18	£22	£27	£33
ROUTER WORKTOP JIG	039112	£17	£21	£26	£32
BISCUIT JOINTER 110V	039113	£19	£25	£31	£38

SITE EQUIPMENT & TOOLS

FIXING	Code	1 DAY	2 DAY	3 DAY	1 WEEK
PORTA NAILER	031098	£21	£27	£33	£41
PASLODE NAIL GUN 1ST FIX	031099	£27	£35	£43	£53
PASLODE NAIL GUN 2ND FIX	031100	£27	£35	£43	£53
HILTI DX460 NAIL GUN	031101	£26	£32	£40	£50
HAMMER STAPLEGUN	031102	£15	£18	£21	£27
ARROW T50 STAPLER 8MM-16M	031103	£6	£7	£7	£9
TEK GUN 110V	031104	£16	£20	£25	£30

SANDING	Code	1 DAY	2 DAY	3 DAY	1 WEEK
FLOOR SANDER 8" 240V	057101	£35	£43	£53	£66
FLOOR EDGER 7" 240V	057102	£24	£29	£36	£44
FLOOR FINISHING SANDER	057103	£35	£44	£53	£68
4"BELT SANDER	057105	£18	£24	£29	£36

All sanders have dust collection bags – these are chargeable

DUST EXTRACTION	Code	1 DAY	2 DAY	3 DAY	1 WEEK
DUST CONTROL AIR CUBE	011119	£27	£35	£43	£53
110V DUST EXTRACTION UNIT (CYCLONE)	015130	£35	£43	£53	£66

Use Cyclone Extractor for heavy dust from machines. Use Air Cube to filter atmospheric dust.

SITE EQUIPMENT & TOOLS

PUMPS	Code	1 DAY	2 DAY	3 DAY	1 WEEK
FUEL OIL TRANSFER PUMP	054101	£18	£24	£29	£36
PUMP 1" RESIDUE 1400 GPH	054102	£26	£32	£40	£50
PUMP 2" SUB 3000 GPH	054103	£21	£28	£35	£42
PUMP 2" PETROL 2600 GPH	054104	£36	£44	£54	£69
PUMP 3" DIESEL 5000 GPH	054105	£55	£71	£87	£109

LIGHTS	Code	1 DAY	2 DAY	3 DAY	1 WEEK
FESTOON 30'X 10 LIGHTS	025106	£11	£14	£15	£18
FLOODLIGHT 500W	025107	£6	£7	£8	£10
FLOODLIGHT 500W X 2	025109	£8	£10	£13	£15
DEFENDER UPLIGHT	025110	£9	£10	£11	£14
DIESEL LIGHTING TOWER	027110	£165	£215	£264	£330

SITE EQUIPMENT & TOOLS

HEATING	Code	1 DAY	2 DAY	3 DAY	1 WEEK
GAS HEATER 125000BTU-SMAL	037106	£25	£31	£39	£48
GAS HEATER 260000BTU-LGE	037107	£35	£43	£53	£66
2KW OIL FILLED HEATER 240	037108	£11	£14	£15	£18
INDIRECT HEATER 20KW	037110	£70	£90	£110	£140
INDIRECT HEATER 75KW	037111	£90	£120	£150	£180
SITE CONVECTOR HEATER GAS	037113	£17	£21	£26	£32
FAN HEATER IND.240V 3KW	037116	£14	£16	£18	£22
INFRA-RED HEATER 2.4KW	037117	£15	£19	£22	£28
INFRA-RED HEATER 3KW	037118	£29	£33	£39	£48

COOLING & VENTILATION	Code	1 DAY	2 DAY	3 DAY	1 WEEK
AIR CONDITIONER 12000 BTU	037101	£48	£55	£62	£79
FUME EXTRACTOR FAN 110V	037130	£40	£51	£62	£79
WAREHOUSE FAN 5000CFM 240	037131	£30	£39	£47	£59

SITE EQUIPMENT & TOOLS

CLEANING	Code	1 DAY	2 DAY	3 DAY	1 WEEK
STEAM CARPET CLEANER	009099	£30	£39	£47	£59
CARPET CLEANER DOMESTIC	009100	£24	£29	£37	£46
FLOOR SCRUBBER DRIER H/D	011099	£72	£109	£145	£180
BOWSER WASHER 3000PSI	011100	£106	£137	£168	£200
3000PSI HOT WASHER ON 700L BOWSER	011121	£178	£230	£283	£350
FLOOR SCRUBBER/POLISHER	011101	£28	£36	£44	£55
PRESS.WASHER 1700PSI	011103	£28	£37	£44	£55
PRESS.WASHER PETROL 2500P	011104	£48	£62	£76	£95
PRESS.WASHER DIESEL 3000P	011107	£72	£94	£115	£140
STEAM CLEANER 1400PSI	011108	£66	£77	£88	£110
VAC.CLEANER IND. LG	011112	£26	£32	£40	£50

DRYING	Code	1 DAY	2 DAY	3 DAY	1 WEEK
DEHUMIDIFIER 240V COMPACT	037103	£25	£31	£39	£48
DEHUMIDIFIER LARGE H/DUTY 110/240V	037105	£42	£49	£55	£70

THAME 01844 212468 - ALL PRICES PLUS VAT

SITE EQUIPMENT & TOOLS

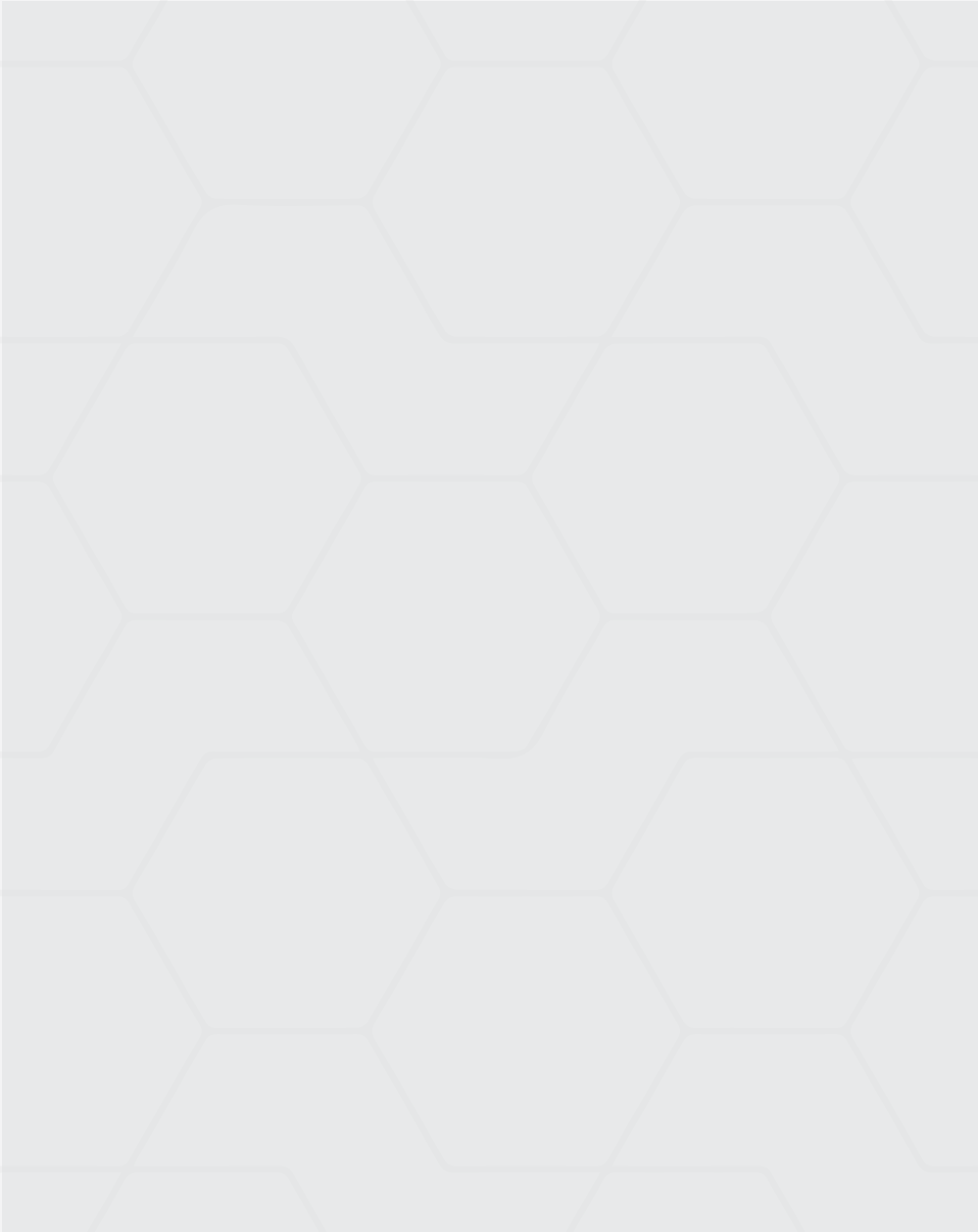
SPRAYING	Code	1 DAY	2 DAY	3 DAY	1 WEEK
AIRLESS SPRAY UNIT 110V	073115	£75	£114	£150	£189
Titan will spray emulsion, gloss, smooth masonry paint or varnish - unsuitable for cellulose. Cleaning chargeable on all units.					

SITE EQUIPMENT & TOOLS

WELDING	Code	1 DAY	2 DAY	3 DAY	1 WEEK
ARC WELDER 160AMP 240V	083102	£17	£21	£26	£32
PETROL WELDER 220AMP	083104	£43	£57	£69	£86
MINI MIG 120 AMP GASLESS	083110	£22	£28	£36	£43
MIG WELDER 160 AMP	083111	£35	£43	£53	£66
Genset has 110v 16a outlet. Wire and gas, if required, extra for MIG Welders.					

FABRICATION	Code	1 DAY	2 DAY	3 DAY	1 WEEK
NIBBLER 1.5MM 110V	083114	£21	£27	£33	£41

SITE EQUIPMENT & TOOLS



SITE EQUIPMENT & TOOLS



PROPS	Code	1 DAY	2 DAY	3 DAY	1 WEEK
NO.0 ACROW PROP 3'4"- 6'1"	063101	£4	£4	£4	£4
NO.1 ACROW PROP 5'8"-10'4"	063102	£4	£4	£4	£4
NO.2 ACROW PROP 6'6"-11'1"	063103	£4	£4	£4	£4
NO.3 ACROW PROP 8'6"-13'2"	063104	£5	£5	£5	£5
NO.4 ACROW PROP 10'6"-16'2"	063105	£6	£6	£6	£6
TRENCH PROP 1'7"- 2'4"	063106	£4	£4	£4	£4
STRONGBOY WALL SUPPORT	063107	£5	£5	£6	£7
PROP PAL NEEDLE SUPPORT	063108	£17	£17	£17	£17

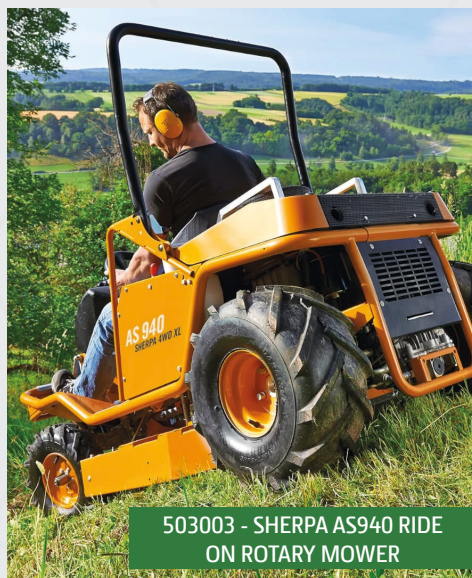
GARDENING & RECREATION



GARDENING & RECREATION	Code	1 DAY	2 DAY	3 DAY	1 WEEK
SINGLE HEAD GAS BLOWTORCH	045101	£6	£7	£8	£10
3 HEAD GAS BLOW TORCH	033103	£13	£16	£19	£24
HEDGETRIMMER 24" ELECTRIC	033107	£21	£27	£33	£41
HEDGETRIMMER 20" PETROL	033108	£28	£36	£44	£55
HEDGETRIMMER 18" ARTIC/LONG REACH	033104	£33	£42	£51	£64
SEED SPREADER	033125	£8	£9	£10	£13
LEAF VAC/BLOWER PETROL	033115	£27	£35	£43	£53
LOG SPLITTER 7T 240V ELECTRIC	033106	£31	£39	£48	£60
STUMP GRINDER 13HP	033135	£116	£197	£272	£270
STUMP GRINDER 6HP	033134	£80	£120	£160	£200
75MM (3") CHIPPER	033127	£65	£98	£147	£195
SHREDDER 25MM ELECTRIC	033128	£31	£39	£48	£60
WHEELBARROW	007126	£5	£6	£7	£8

GARDENING & RECREATION

GRASS CUTTING	Code	1 DAY	2 DAY	3 DAY	1 WEEK
BRUSH CUTTER SAFETY KIT	035200	£5	£6	£7	£8
STRIMMER PETROL	035101	£22	£28	£36	£43
BRUSH CUTTER PETROL	035102	£29	£37	£46	£57
ROTARY MOWER 17"	035106	£21	£27	£33	£41
ROTARY MOWER 19" SELF PROPELLED	035107	£47	£59	£87	£93
JOHN DEERE 42" RIDE ON MOWER	035112	£90	£138	£187	£240
SCAG SWZ HEAVY DUTY ROTARY MOWER	035123	£162	£208	£313	£320
SCAG SWZ HEAVY DUTY FLAIL MOWER	035127	£220	£300	£380	£450
BRUSHCUTTER MOWER	503003	£150	£200	£300	£350
JOHN DEERE X950R HIGH TIP COLLECTOR	503002	£200	£280	£395	£395
CAMON SCYTHE CUTTER 30"SELF PROPELLED	035108	£88	£132	£176	£220



GARDENING & RECREATION



033110 - HYDRAULIC POST BORER



033112 - AERATOR - 4"

POST HOLE BORERS	Code	1 DAY	2 DAY	3 DAY	1 WEEK
POST DRIVER MANUAL	033117	£8	£9	£10	£13
AUGER EXTENSION FOR 033119	033120	£8	£9	£10	£13
POST HOLE BORER 6"MANUAL	033118	£9	£10	£11	£14
POST BORER PETROL - 2 MAN	033119	£50	£64	£79	£98
HYDRAULIC POST BORER	033110	£80	£103	£127	£158

Auger options :Petrol 2 man:100mm, 200mm. Hydraulic:100mm, 200mm, 350mm

GARDENING & RECREATION

TURF CARE	Code	1 DAY	2 DAY	3 DAY	1 WEEK
GARDEN ROLLER	033105	£9	£10	£11	£14
AERATOR - 4" (petrol solid or hollow tines) **	033112	£75	£100	£125	£150
LAWN SCARIFIER 16" PETROL	033113	£31	£40	£49	£61
LAWN SCARIFIER 20"H/D PETROL	033114	£40	£51	£62	£79
TURF CUTTER 12" PETROL	033133	£47	£71	£94	£117

**Machine width 550mm.Tine width 410mm.Tine Depth 75mm.

ROTAVATORS	Code	1 DAY	2 DAY	3 DAY	1 WEEK
ROTAVATOR 5HP TILLER	033122	£43	£54	£61	£88
ROTAVATOR 18" 8HP	033123	£70	£90	£110	£140
BARETTO ROTAVATOR 24" 13HP	033124	£90	£140	£190	£250



033133 - TURF CUTTER 12" PETROL



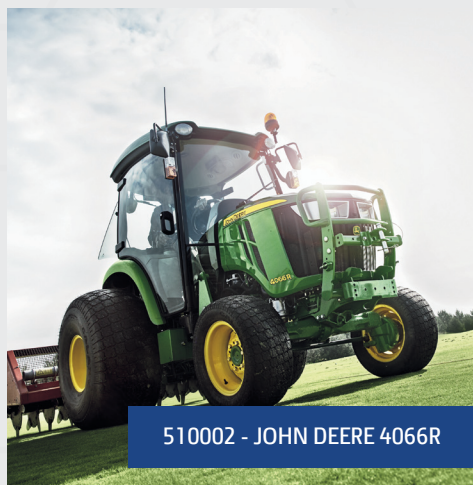
033123 - ROTAVATOR 18" 8HP

TRACTORS & UTILITY VEHICLES

TRACTORS	Code	1 DAY	2 DAY	3 DAY	1 WEEK
JOHN DEERE 2026R	035116	£130	£200	£270	£330
JOHN DEERE 3038E	510001	£185	£260	£390	£340
JOHN DEERE 3045	510003	£190	£280	£420	£385
JOHN DEERE 4066	510002	£264	£385	£578	£550
JOHN DEERE 6120	510005	£350	£500	£750	£675

TRACTOR ATTACHMENTS	Code	1 DAY	2 DAY	3 DAY	1 WEEK
60" TRAILED ROLLER	035121	£31	£39	£48	£60
2M CHAIN HARROW SET	035120	£14	£21	£31	£33
1.3M REAR MOUNTED ROTAVATOR	035119	£90	£132	£187	£240
1.2M (4ft) REAR MOUNTED FLAIL MOWER	035118	£90	£132	£187	£240
HYDRAULIC 3PT MOUNTED LOG SPLITTER	033136	£48	£71	£95	£118

***Above prices do not include tractor hire**



TRACTORS & UTILITY VEHICLES



040019 - JOHN DEERE GATOR

UTILITY VEHICLES

	Code	1 DAY	2 DAY	3 DAY	1 WEEK
JOHN DEERE 4WD GATOR UTILITY VEHICLE 2 SEAT	512003	£175	£250	£350	£375

TRAILERS

TRAILERS	Code	1 DAY	2 DAY	3 DAY	1 WEEK
WHEEL CLAMP	079101	£5	£6	£7	£8
CARGO STRAPS X 2	079116	£6	£7	£8	£10
CAMPING TRAILER 350KG	079102	£28	£43	£57	£71
CARGO TRAILER 450KG 6X4'	079104	£29	£37	£44	£55
CARGO TRAILER 2000KG 8X4'	079105	£31	£48	£71	£94
PLANT TRAILER 2000KG 8X4'	079106	£31	£48	£71	£94
PLANT TRAILER 3500KG 10X6	079118	£40	£61	£90	£120
CAR TRAILER 13'X 6'RUNWAY	079107	£44	£66	£101	£132
CAR TRAILER 16'X 6'RUNWAY	079109	£55	£83	£125	£165
CAR TRAILER 16'x7' TILTBED	079121	£66	£99	£152	£198
VAN TRAILER 1000KG 8X4X5'	079114	£51	£77	£117	£154
VAN TRAILER 1700KG 10X5X6	079117	£55	£84	£125	£165
TIPPING TRAILER 2000KG	079111	£48	£72	£108	£143
MOTORCYCLE TRAILER	079112	£33	£43	£53	£66
VIBRO ROLLER TRAILER	079115	£15	£19	£22	£28
10'X5' FLATBED TRAILER	079120	£44	£68	£99	£132
FLATBED TRAILER 14'X6'6"	079119	£51	£77	£117	£154

TRAILERS



079121 - CAR TRAILER 16'x7' TILTBED



079106 - PLANT TRAILER 2000KG 8X4'



079111 - TIPPING TRAILER / 079114 - VAN TRAILER

NEW HIRE PRICE LIST OUT NOW!

Over 36 pages of professional groundcare machinery for tasks including mowing, aeration, top dressing, material handling, compaction and much more!



Visit us at our depot in Twyford:

London Road, Hare Hatch, Twyford, Berkshire, RG10 9EQ

www.turfleeet.co.uk





Turfleet Hire

A subsidiary of Helpful Hirings Ltd



OVERSEEDING



DUST SUPPRESSION



TOP DRESSING



TRACTORS & DUMP TRAILERS



HEALTH & SAFETY - Working at Height

Falls from height are the primary cause of fatalities in the workplace. New legislation introduced in 2005 requires a three step risk assessment: avoid working at height if possible, select the safest equipment to prevent a fall, minimise the consequences of a fall.

HEALTH & SAFETY – Dust

We offer a range of extraction to allow a clean working environment and use PPE equipment.

HEALTH & SAFETY – Noise

Noise regulations (1989) require noise assessments to be conducted by a competent person for levels above 85 dBA. Select quiet equipment wherever possible and use PPE.

HEALTH & SAFETY - Hand Arm Vibration Syndrome

New legislation in 2005 requires risk assessment to control, to reduce and prevent HAVS which causes white finger. A traffic light system to identify levels of vibration was introduced. Using PPE reduces the risk but always check the vibration level of a machine. Select the 6 digit code in the brochure and cross reference below. If the machine is not listed, please call.

GREEN	0 – 5m/s	REGULAR USE IN AN 8 HOUR DAY				LOW RISK	
AMBER	5 – 10m/s	MAXIMUM DAILY USE 2 HOURS				MEDIUM RISK	
RED	Over 10m/s	SPECIFIC ASSESSMENT REQUIRED				HIGH RISK	
001109	Needle Gun	015105	Electric Cutter 9"		033133	Turf Cutter	
003101	Bosch 2kg SDS	015107	Electric Cutter 4"		033134	Stump Grinder	
003102	Bosch GBH4	015110	Floor Grinder		035101	Strimmer	
003103	Bosch GSH5	015111	Floor Saw		035102	Brush Cutter	
003104	Bosch GBH7	015112	Wall Chaser		035106/7	Rotary Mower	
003106	Bosch GSH11	015114	Floor Planer		035108	Scythe Cutter	
003107	Bosch GSH27	019101/2	Cordless Drill		035111	Flail Mower	
003108	JCB Beaver Pck	019103	Angle Drill		039109	Power Plane	
003112	Heavy Breaker	019104	Var. Speed Drill		039111	Router	
003113	Demo Pick	019107	Diamond Drill		039113	Biscuit Jointer	
011120	Tile Lifter	019108	Wood/Diamond Drill		053102/3	Electric Threader	
013104	Power Float	019109	Magnetic Drill		057101	Floor Sander	
013107	Vibrating Poker	019111	Stirrer/Mixer		057102	Floor Edger	
013109	Vibrating Plate	031099	Paslode Gun		057103	Finishing Sander	
013111	Vibrating Plate	031101	Hilti DX460		057105	Belt Sander	
013112	Vibrating Rammer	031105/6	Impact Wrench		057106	Orbital Sander	
013113/4	Pedestrian Roller	031107	Screwdriver		057107	Aligator Saw	
013115	Vibrating Screed	033104	Hedge trimmer LR		057108	Palm Sander	
013119	3 Head Scabbler	033107/8	Hedge trimmer		057109	Random Orbital	
013120	Pole Scabbler	31106	Aerator		059100/1	Pullover Saw	
013122	Air Poker	033115	Leaf Vac/Blower		059104	Electric Chainsaw	
013126	Vibrating Plate	033119	Petrol Post Borer		059105/6	Petrol Chainsaw	
015101	Saw Bench	033122	Cultivator		059108/9	Circular Saw	
015102	Saw Bench	033123	Rotavator		059110	Jigsaw	
015103	Petrol Cutter 12"	033124	H/duty Rotavator		059112	Reciprocating Saw	
015104	Electric Cutter 12"	033113/4	Scarifier		083114/5	Nibbler	

YOU HIRE. WE DELIVER.



With over 50 years of experience we are well aware of the pressures under which sites and factories operate. Our fleet of purpose built trucks helps us to guarantee that deliveries are made on time, even at short notice.

